

iQM2 Delta Chart Report

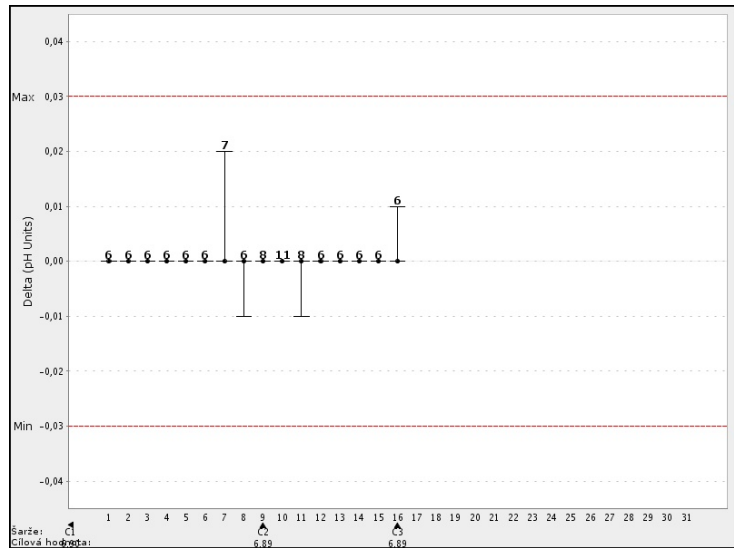
December 2025

Analyzer
Model: GEM® Premier 5000
Area: OKB
Name: GP5000
S/N: 19042798

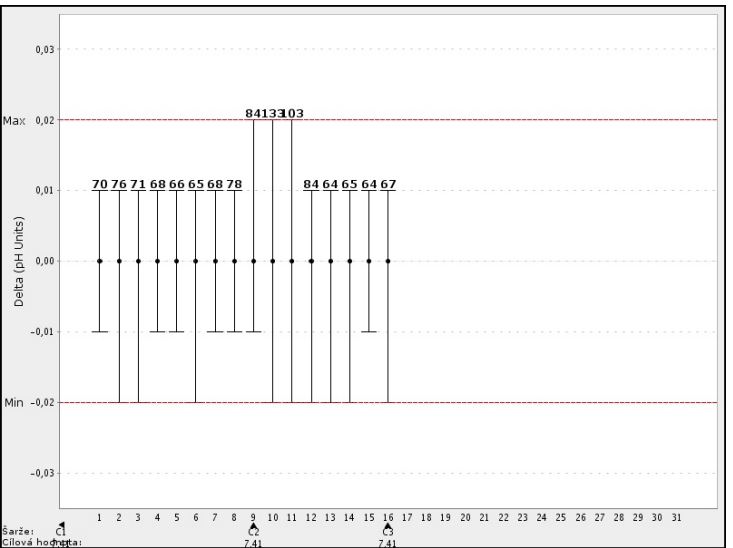
pH



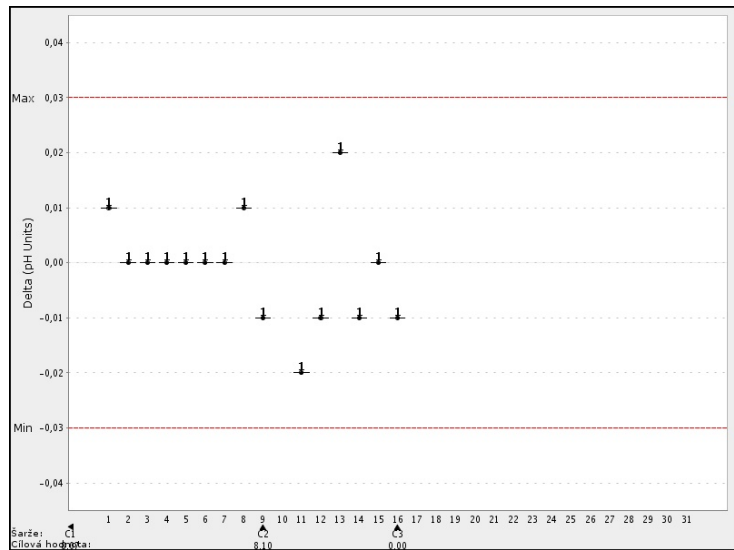
PC Solution: A



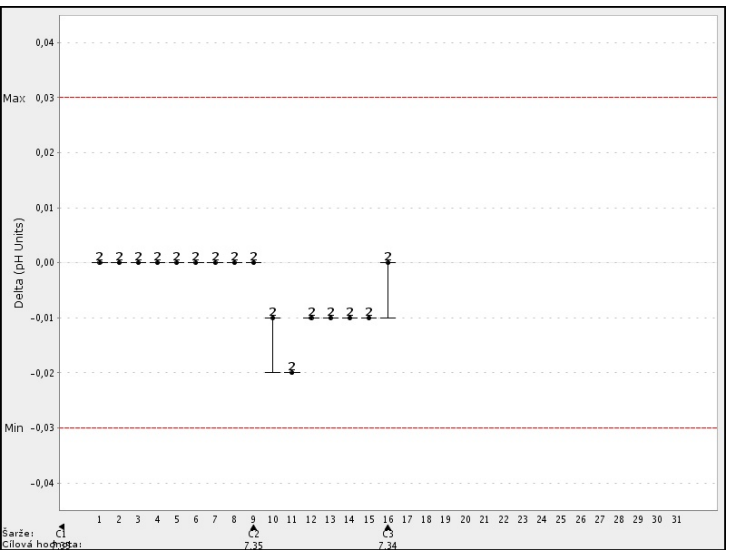
PC Solution: B



PC Solution: C



PC Solution: D



iQM2 Delta Chart Report

December 2025

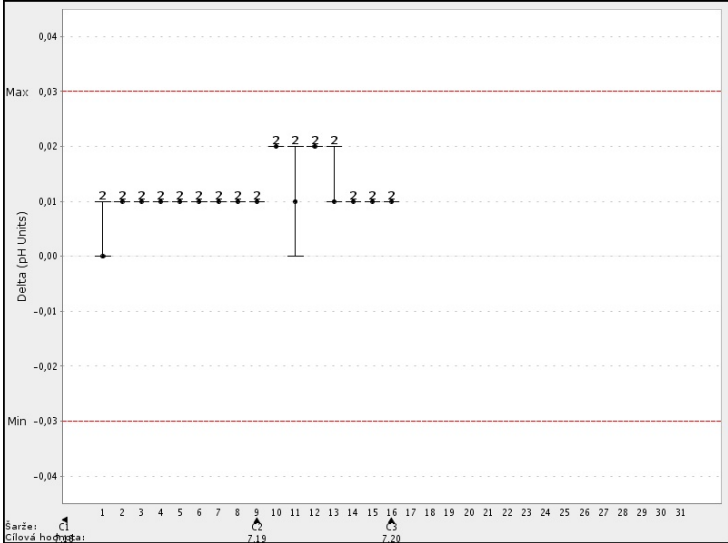
Analyzer

Model: GEM® Premier 5000
Area: OKB
Name: GP5000
S/N: 19042798

pH



PC Solution: E



Cart. Lot #

C1 = 250717O
C2 = 250815E
C3 = 250902S

Lot # = Cart. Lot #
Target = Target Value

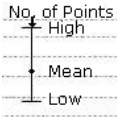
iQM2 Delta Chart Report

December 2025

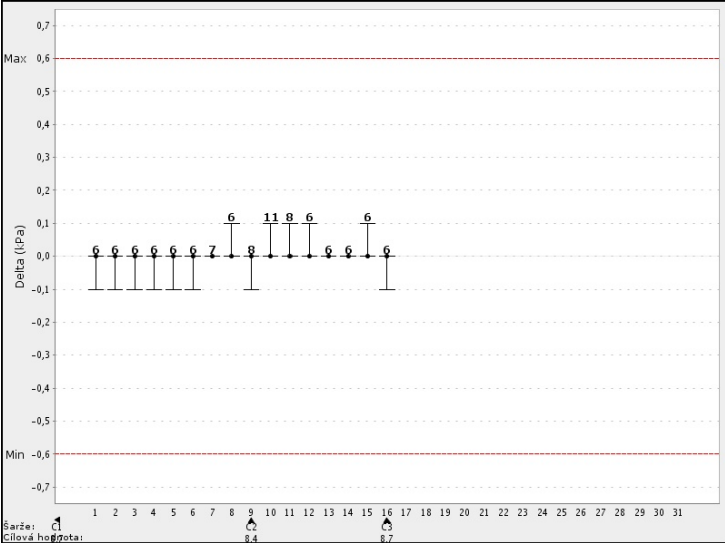
Analyzer

Model: GEM® Premier 5000
Area: OKB
Name: GP5000
S/N: 19042798

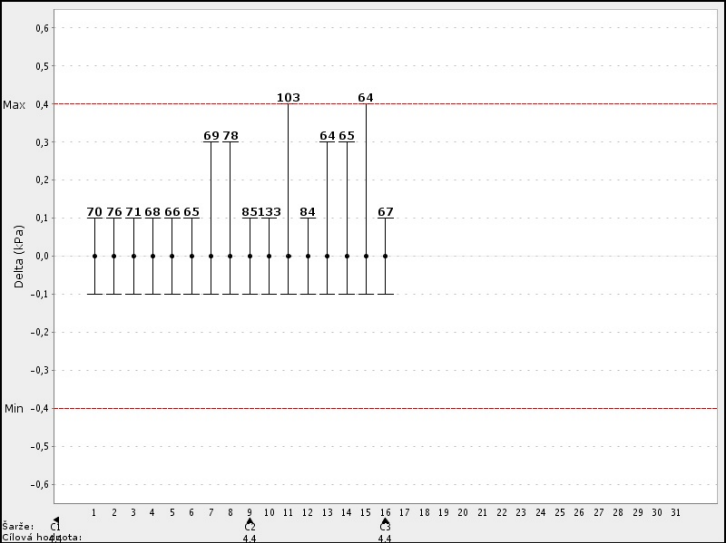
pCO₂



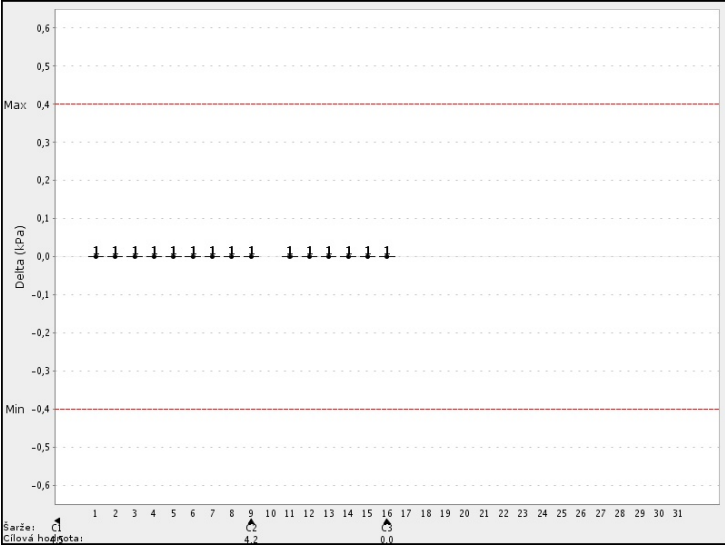
PC Solution: A



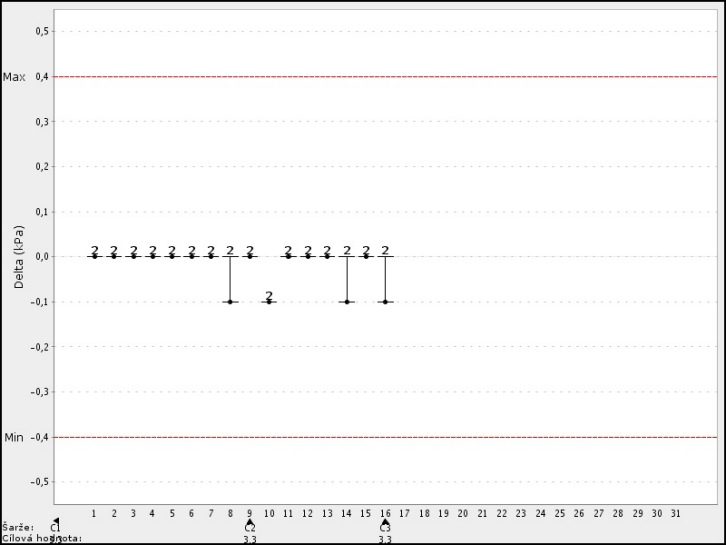
PC Solution: B



PC Solution: C



PC Solution: D



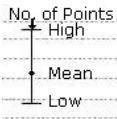
iQM2 Delta Chart Report

December 2025

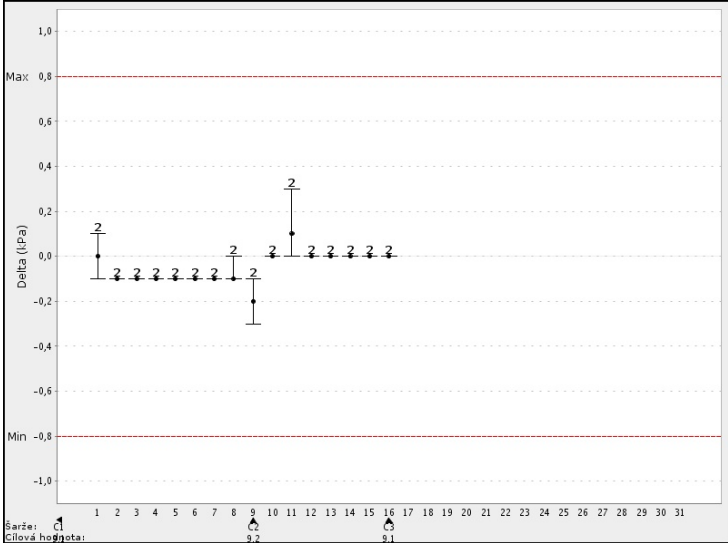
Analyzer

Model: GEM® Premier 5000
Area: OKB
Name: GP5000
S/N: 19042798

pCO₂



PC Solution: E



Cart. Lot #

C1 = 250717O
C2 = 250815E
C3 = 250902S

Lot # = Cart. Lot #
Target = Target Value

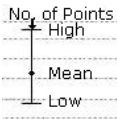
iQM2 Delta Chart Report

December 2025

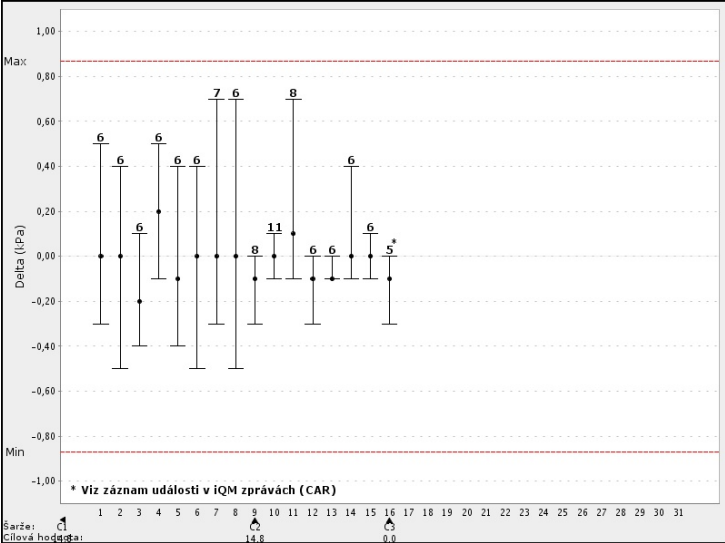
Analyzer

Model: GEM® Premier 5000
Area: OKB
Name: GP5000
S/N: 19042798

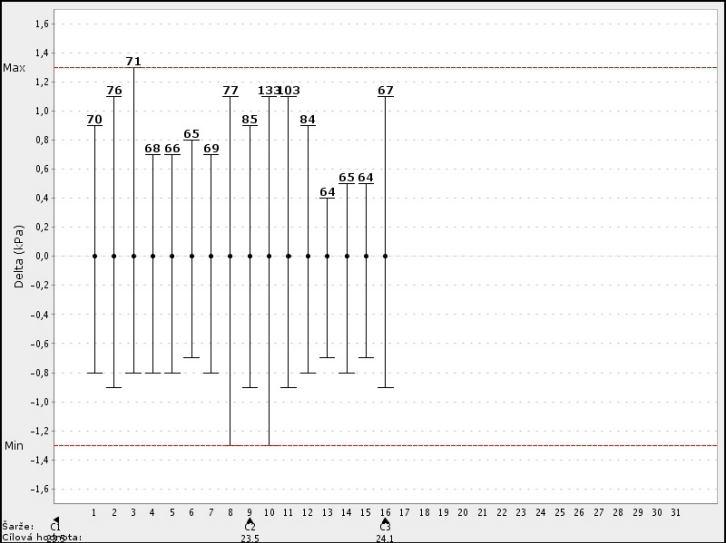
pO_2



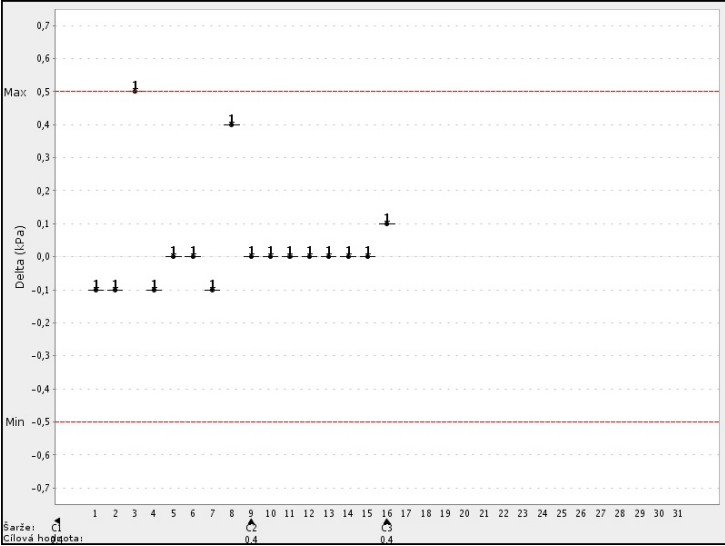
PC Solution: A



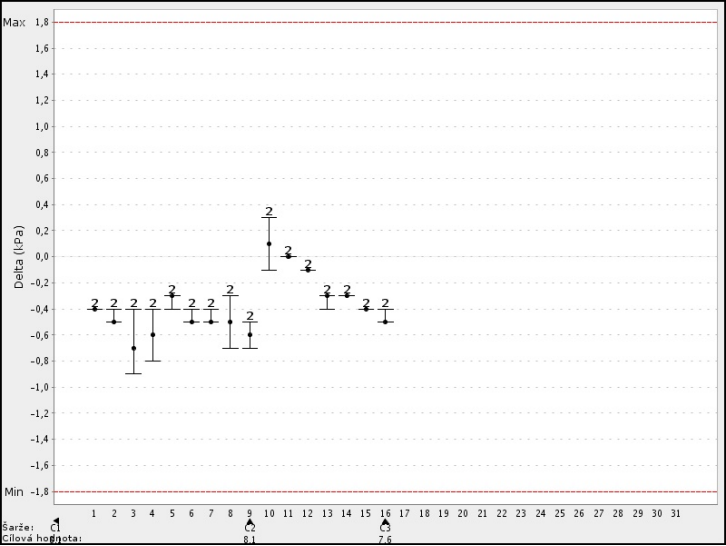
PC Solution: B



PC Solution: C



PC Solution: D



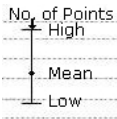
iQM2 Delta Chart Report

December 2025

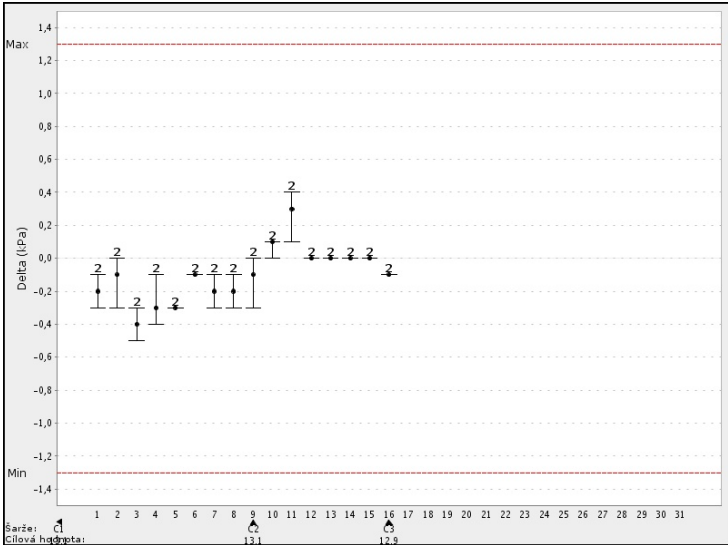
Analyzer

Model: GEM® Premier 5000
Area: OKB
Name: GP5000
S/N: 19042798

pO₂



PC Solution: E



Cart. Lot #

C1 = 250717O
C2 = 250815E
C3 = 250902S

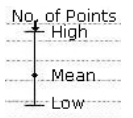
Lot # = Cart. Lot #
Target = Target Value

iQM2 Delta Chart Report

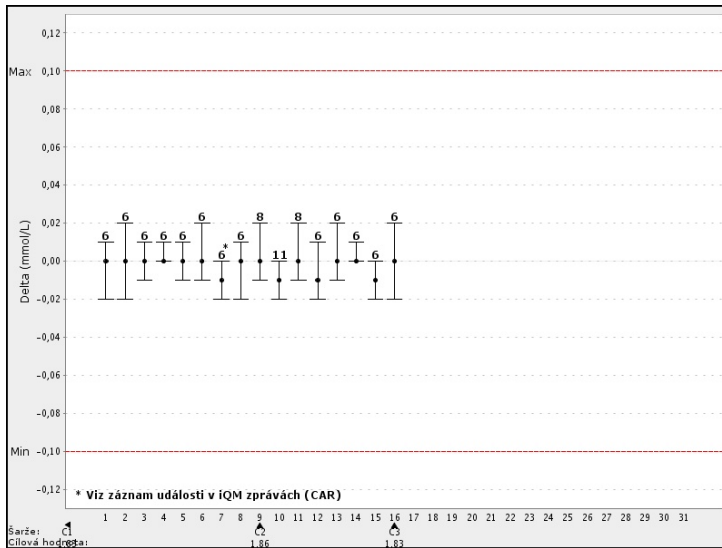
December 2025

Analyzer

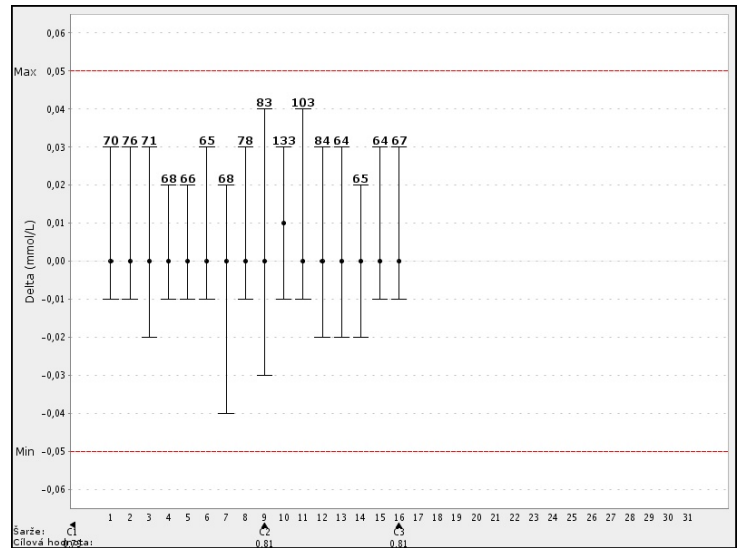
Model: GEM® Premier 5000
 Area: OKB
 Name: GP5000
 S/N: 19042798

Ca⁺⁺

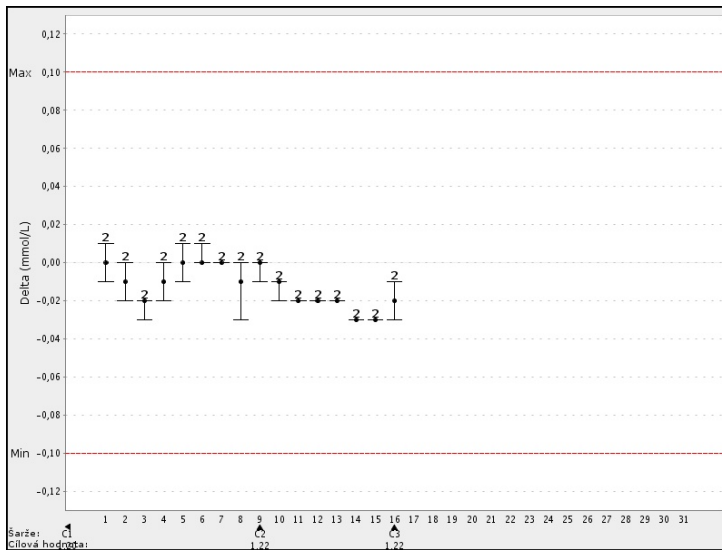
PC Solution: A



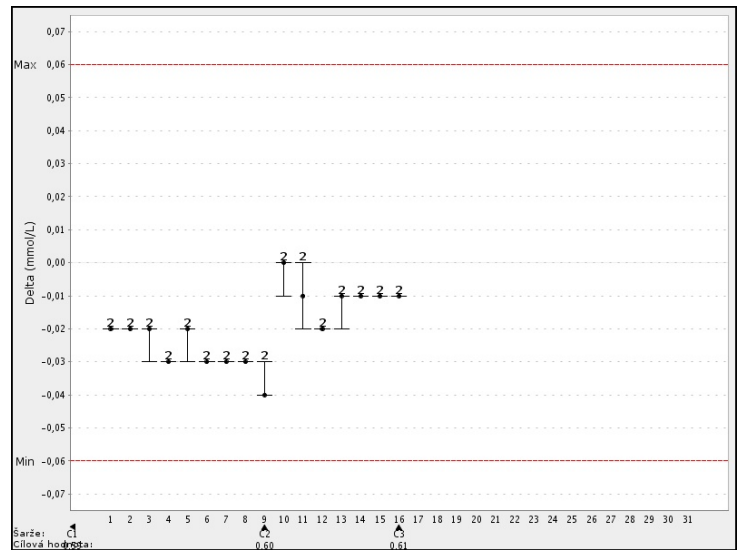
PC Solution: B



PC Solution: D



PC Solution: E



Cart. Lot

C1 = 250717O
 C2 = 250815E
 C3 = 250902S

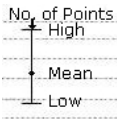
Lot # = Cart. Lot #
 Target = Target Value

iQM2 Delta Chart Report

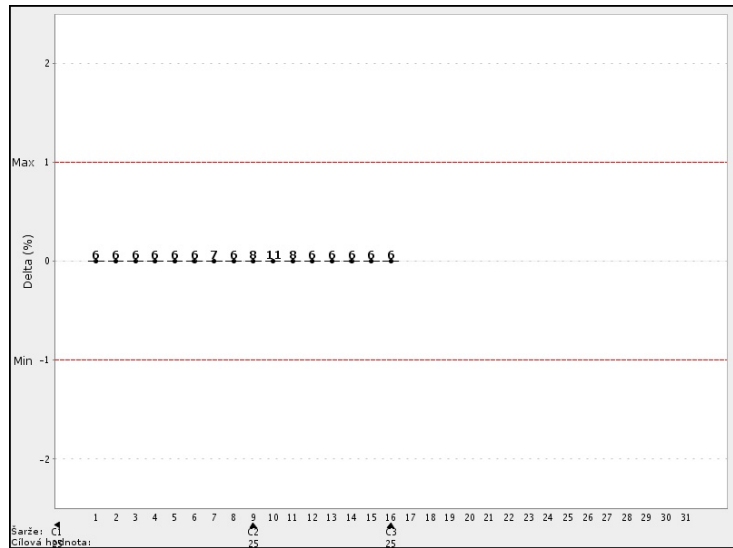
December 2025

Analyzer
Model: GEM® Premier 5000
Area: OKB
Name: GP5000
S/N: 19042798

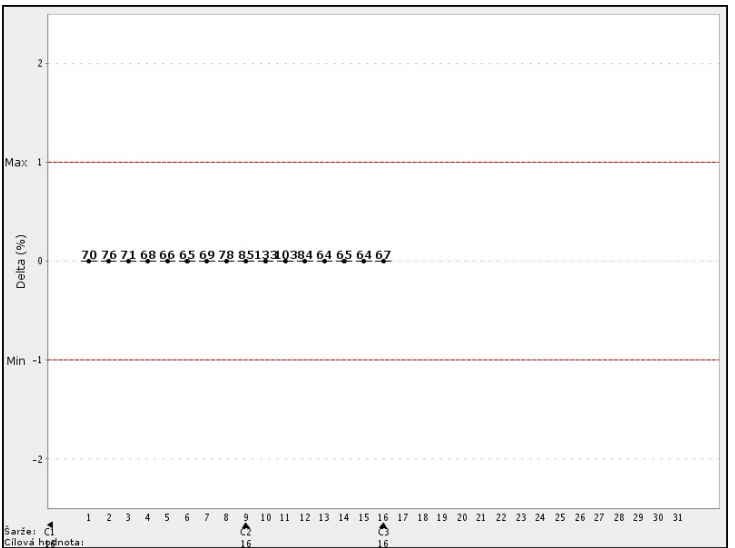
Hct



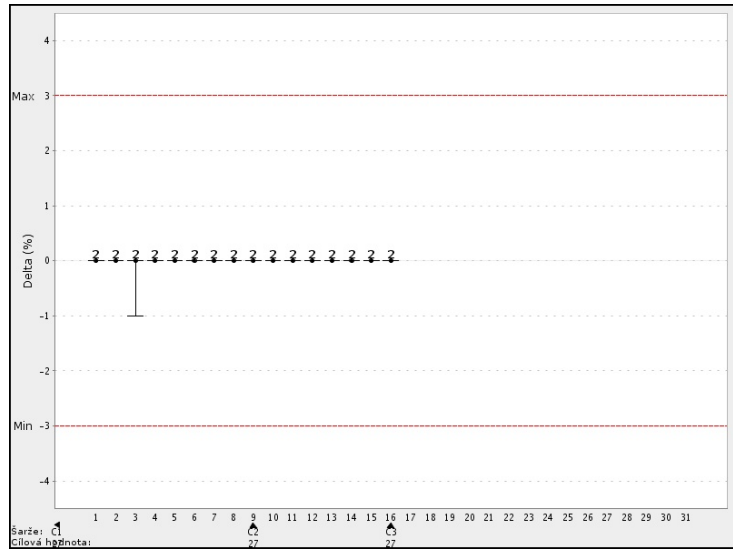
PC Solution: A



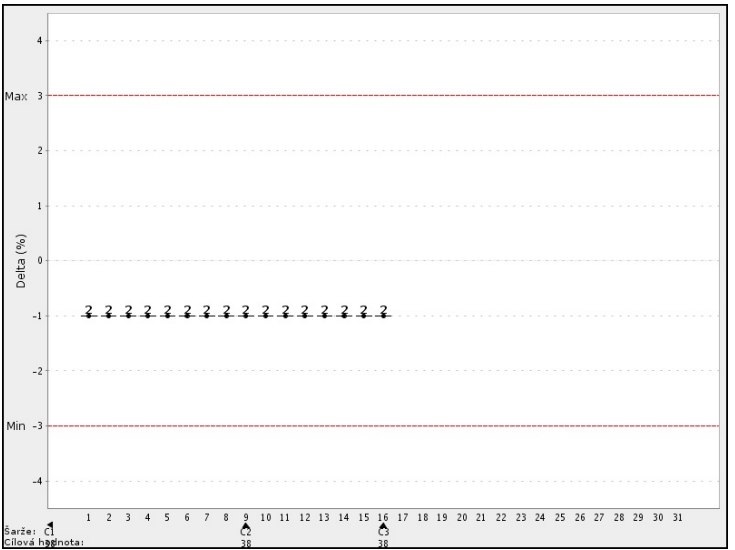
PC Solution: B



PC Solution: D



PC Solution: E



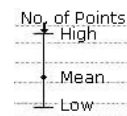
Cart. Lot #
C1 = 250717O
C2 = 250815E
C3 = 250902S

Lot # = Cart. Lot #
Target = Target Value

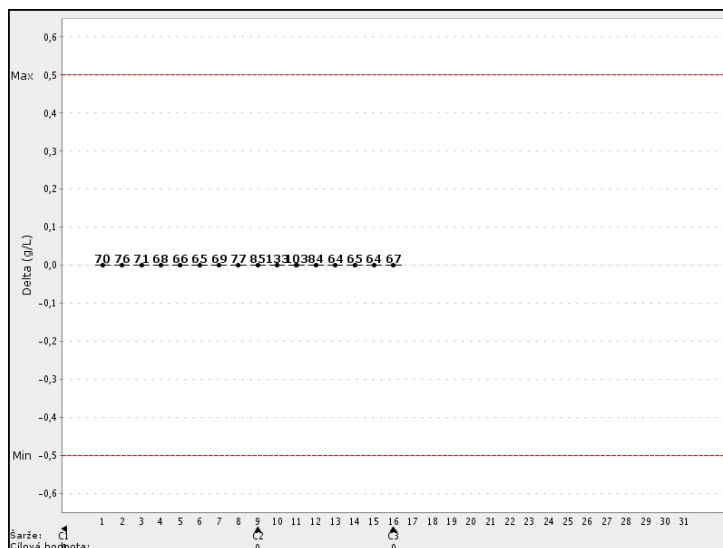
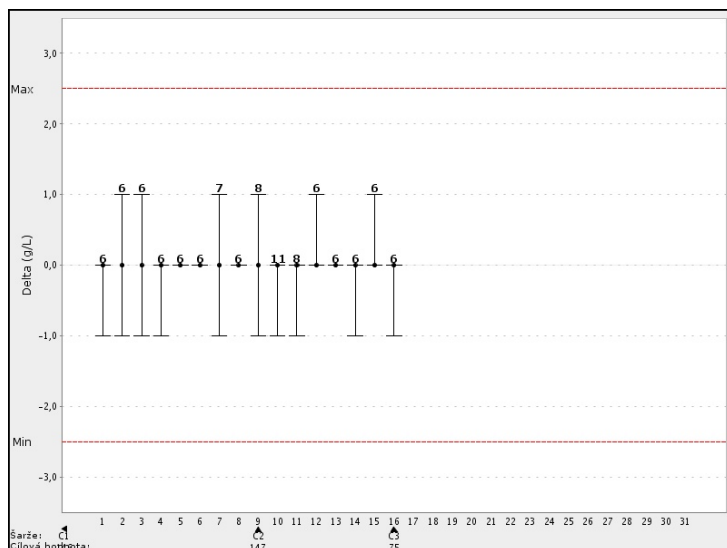
December 2025

Model: GEM® Premier 5000
Area: OKB
Name: GP5000
S/N: 19042798

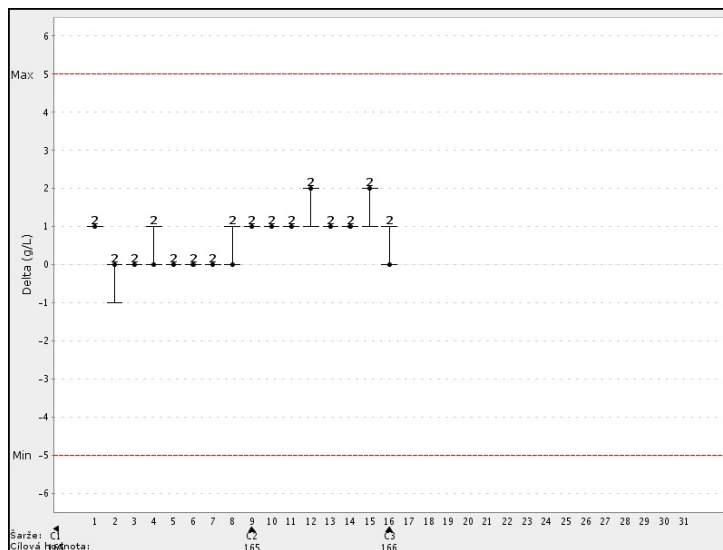
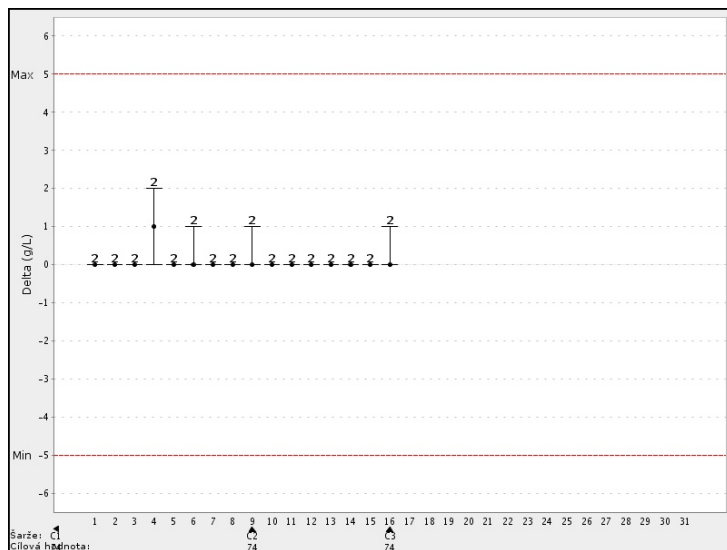
tHb



PC Solution: B



PC Solution: E



Lot # = Cart. Lot #

Target = Target Value

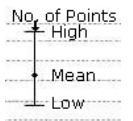
Target	Target value
--------	--------------

iQM2 Delta Chart Report

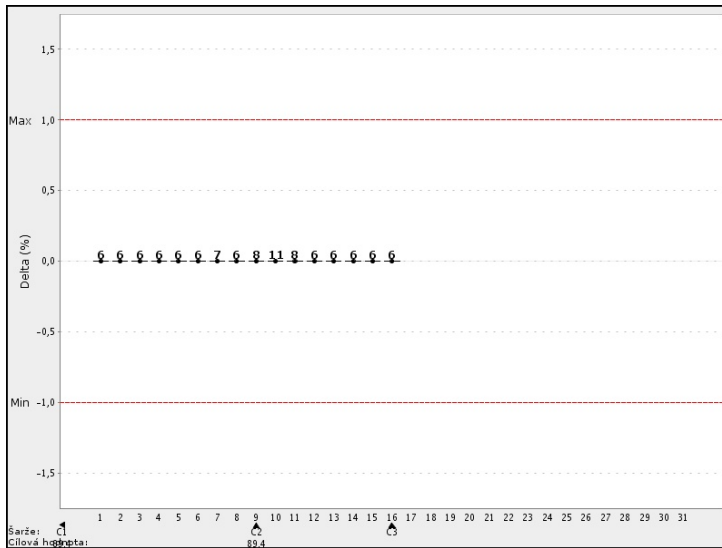
December 2025

Analyzer

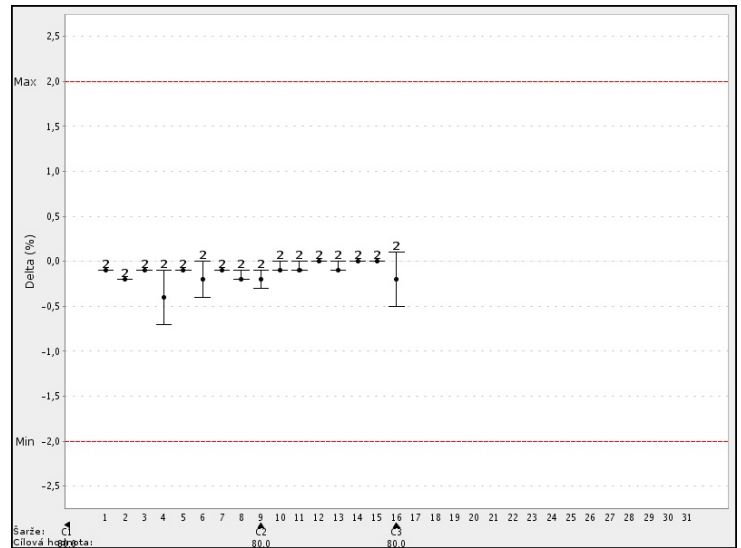
Model: GEM® Premier 5000
Area: OKB
Name: GP5000
S/N: 19042798

O₂Hb

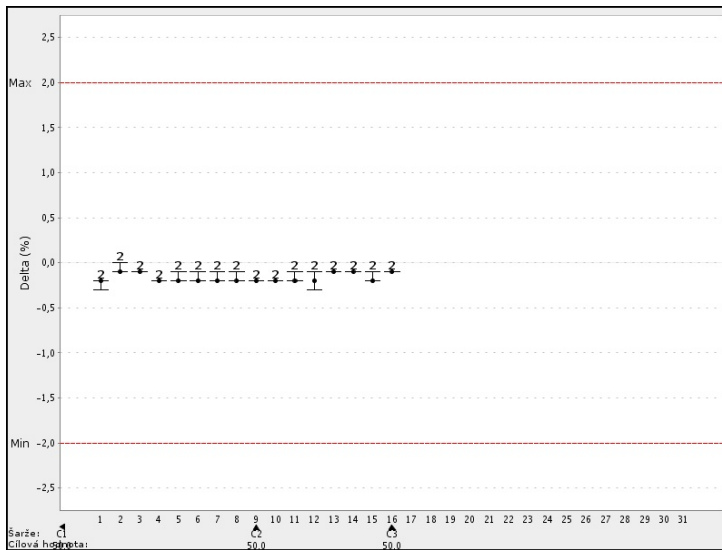
PC Solution: A



PC Solution: D



PC Solution: E



Cart. Lot

C1 = 250717O
C2 = 250815E
C3 = 250902S

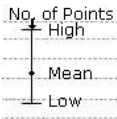
Lot # = Cart. Lot #
Target = Target Value

iQM2 Delta Chart Report

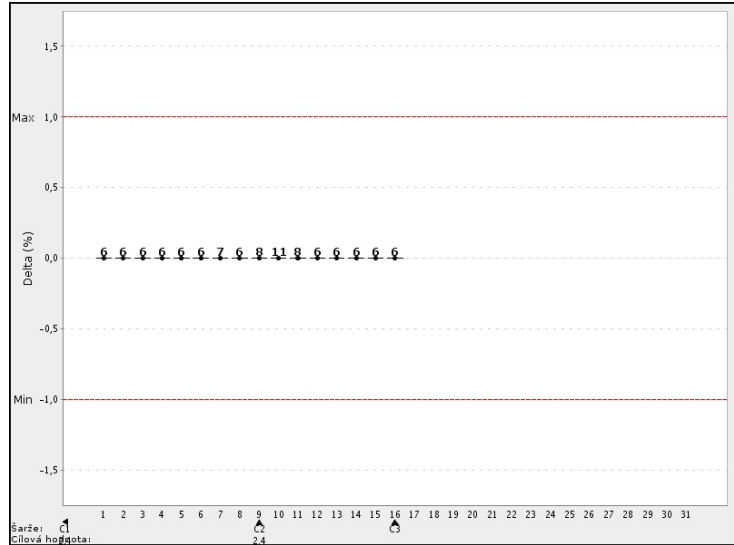
December 2025

Analyzer
Model: GEM® Premier 5000
Area: OKB
Name: GP5000
S/N: 19042798

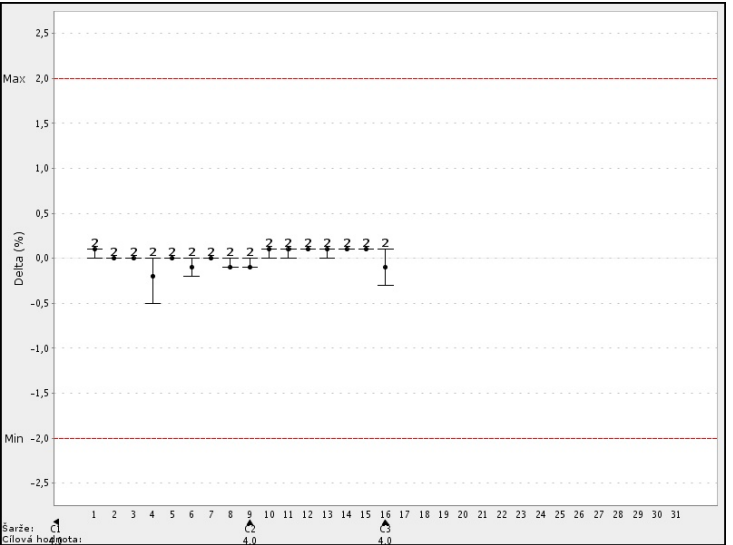
COHb



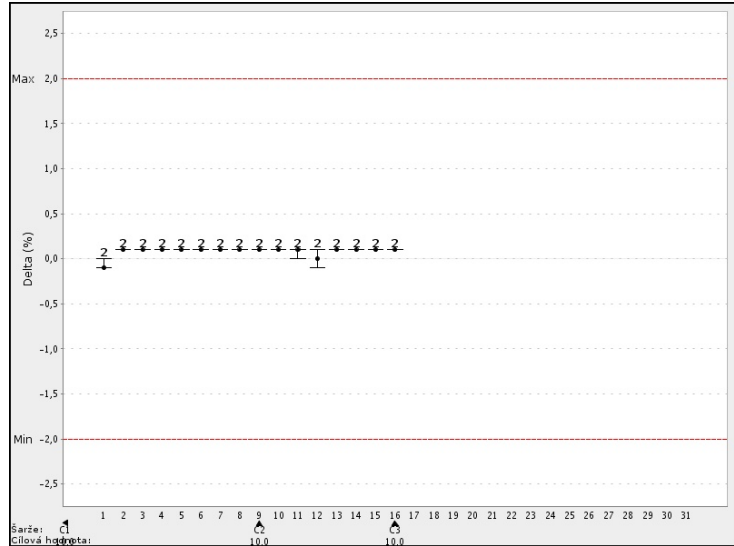
PC Solution: A



PC Solution: D



PC Solution: E



Cart. Lot #

C1 = 250717O
C2 = 250815E
C3 = 250902S

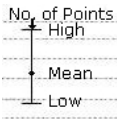
Lot # = Cart. Lot #
Target = Target Value

iQM2 Delta Chart Report

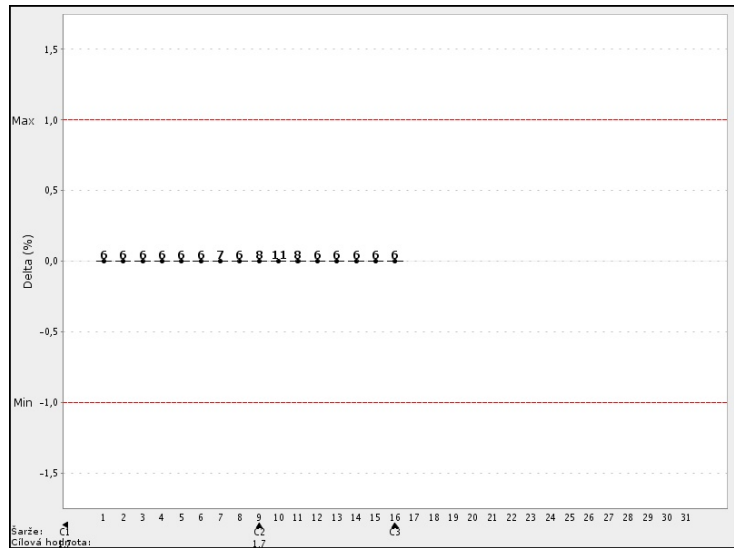
December 2025

Analyzer
Model: GEM® Premier 5000
Area: OKB
Name: GP5000
S/N: 19042798

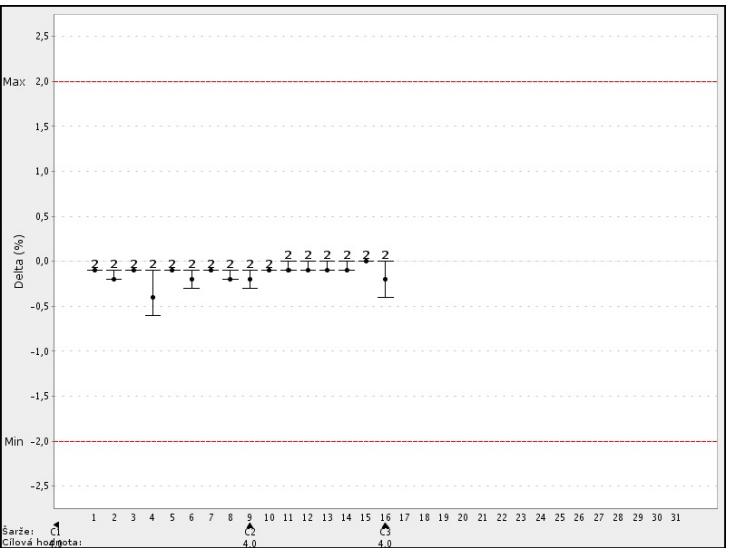
MetHb



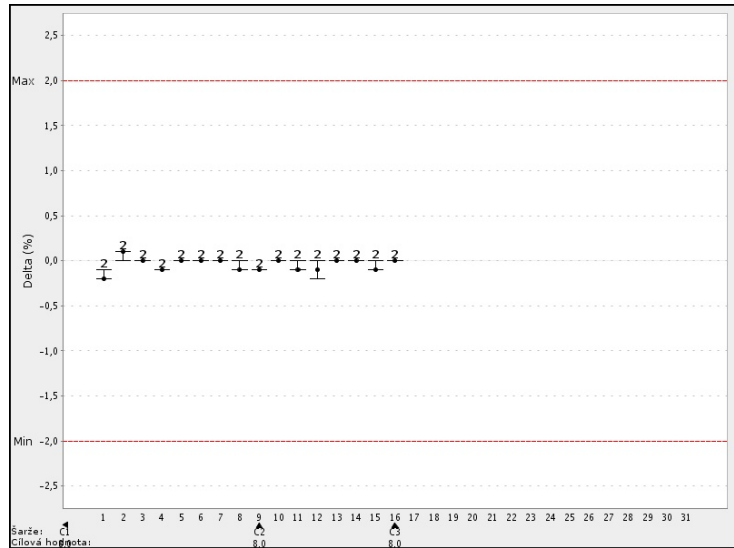
PC Solution: A



PC Solution: D



PC Solution: E



Cart. Lot #

C1 = 250717O
C2 = 250815E
C3 = 250902S

Lot # = Cart. Lot #
Target = Target Value

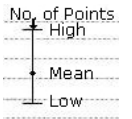
iQM2 Delta Chart Report

December 2025

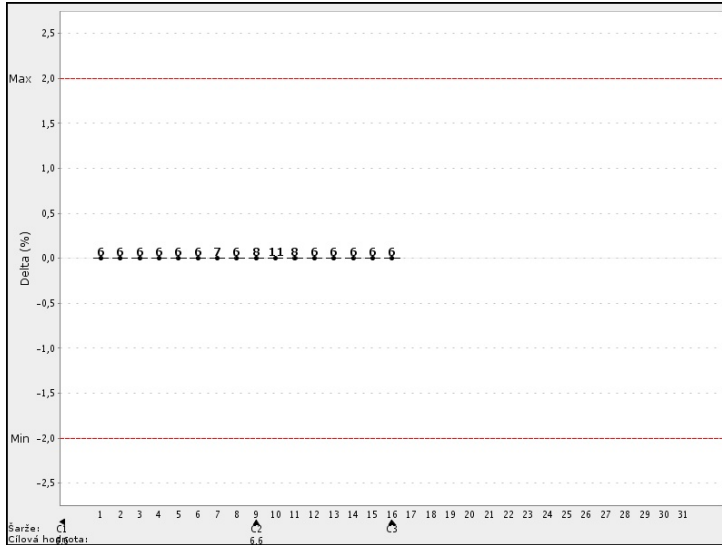
Analyzer

Model: GEM® Premier 5000
Area: OKB
Name: GP5000
S/N: 19042798

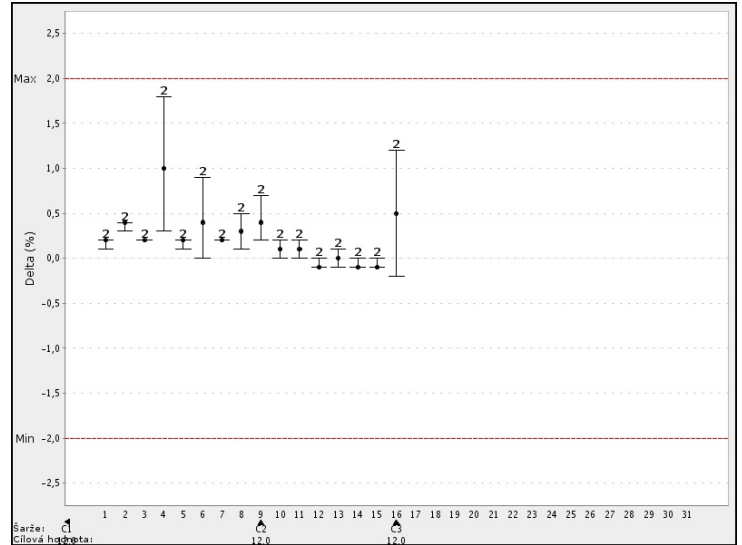
HHb



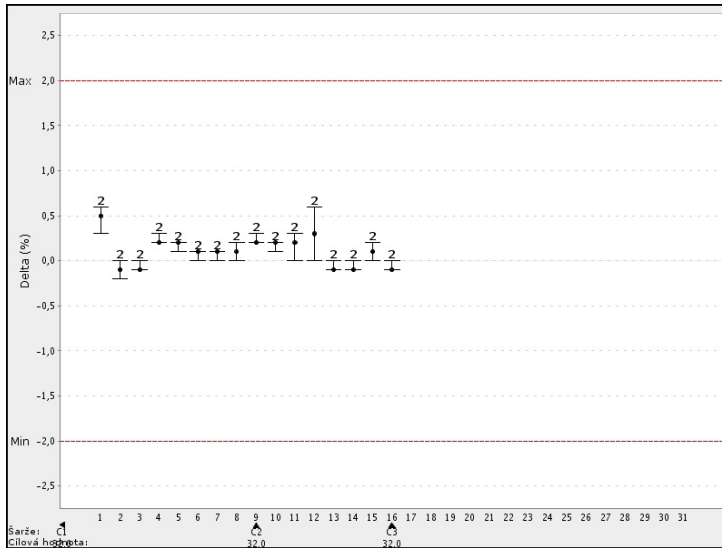
PC Solution: A



PC Solution: D



PC Solution: E



Cart. Lot

C1 = 250717O
C2 = 250815E
C3 = 250902S

Lot # = Cart. Lot #
Target = Target Value